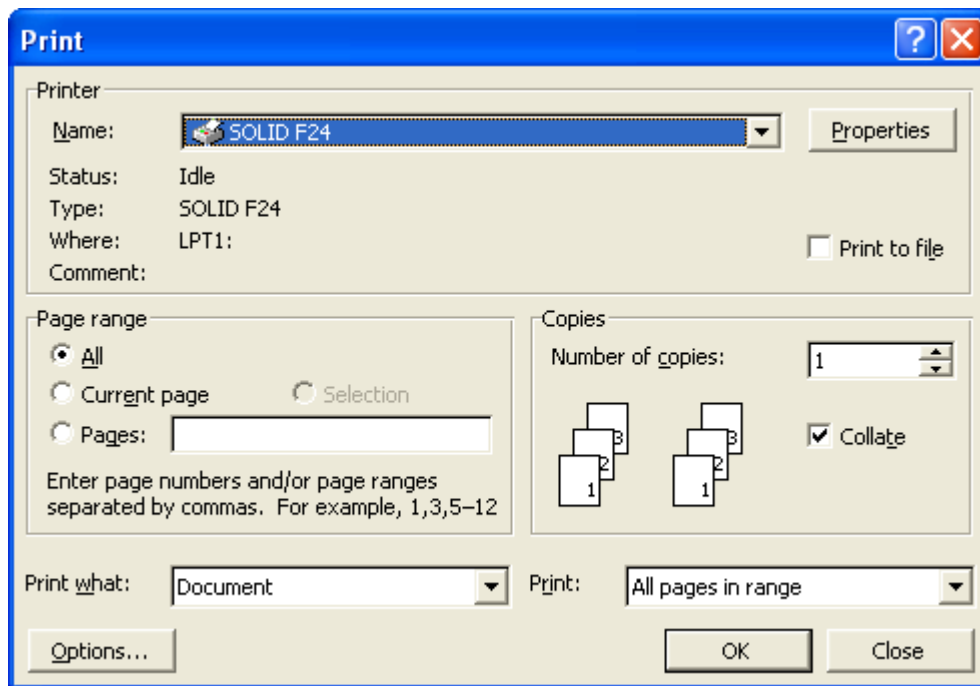


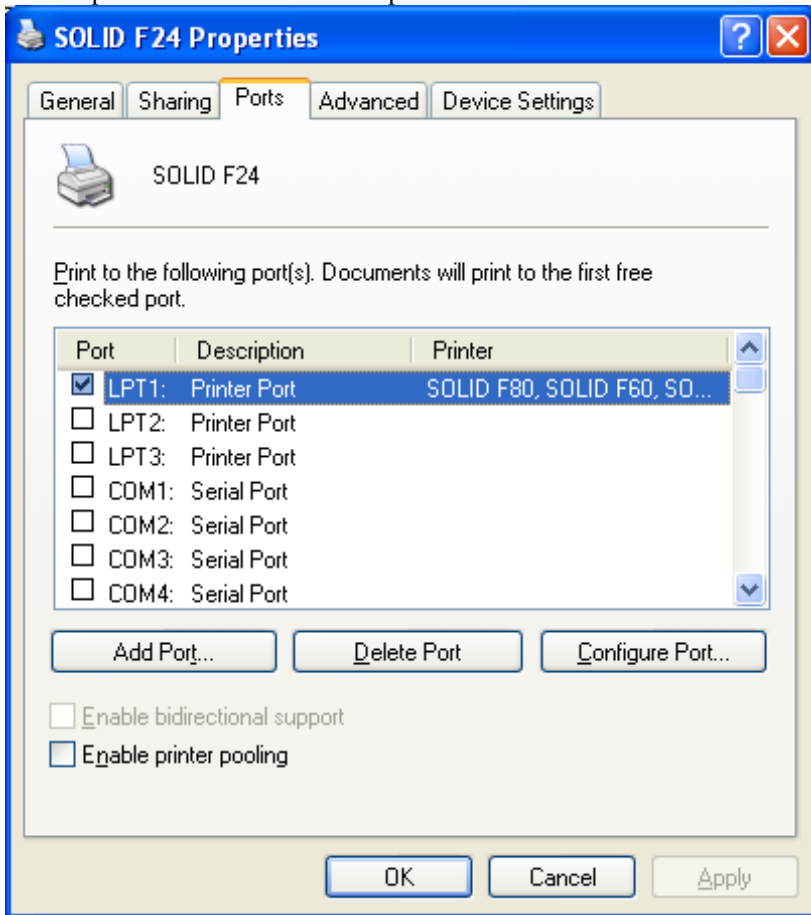
Windows Driver using File Port option

Assuming the customer is using our Windows drivers there are two ways to capture data. Depending on the application they are running sometimes there is an option to check a box that is labeled "Print to file". As shown below.

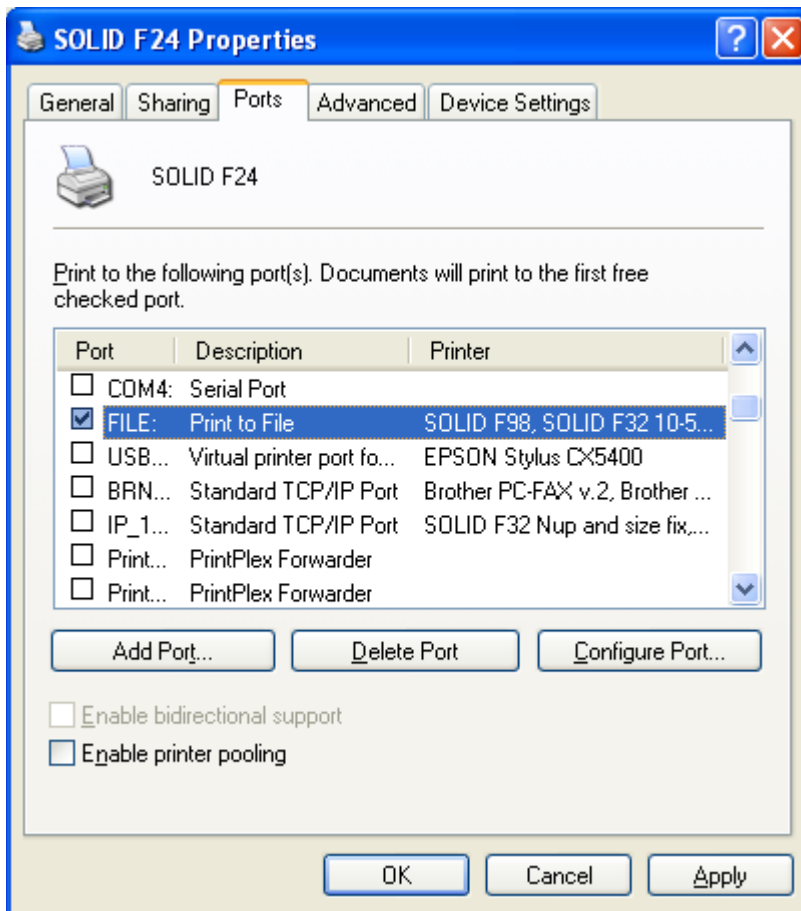


All you would have to do is check the box and hit print. This of course assumes that you first already selected the correct form size that is needed for the job. After you hit the print button you should get a box that will pop up where you can select where you would like to save the file to. Save it where ever you like then you have the print file.

The second method is a little more involved. It requires switching the port of the driver from either the LPT1,USB, or Ethernet port to the File port. This done in the drivers properties. To start go into the printers and faxes folder. Right click the driver in question and select properties. Next click the ports tab at the top of the window. See example below.



Make a note of what the port is set to now and write it down so you can switch it back when we are done. Now scroll down in the list and select FILE and click the check box to the left of the word file. Your screen should look like the screen shot below at this point.



Clicks apply. Print the job, after setting the correct form size in the driver.

Instead of the print job going to the printer you will see a box popup as shown below. Pick the folder where you want to save the file and name it something such as test.prn.

