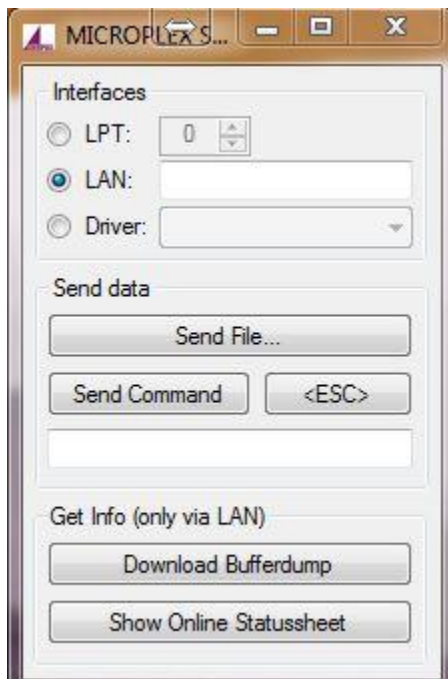
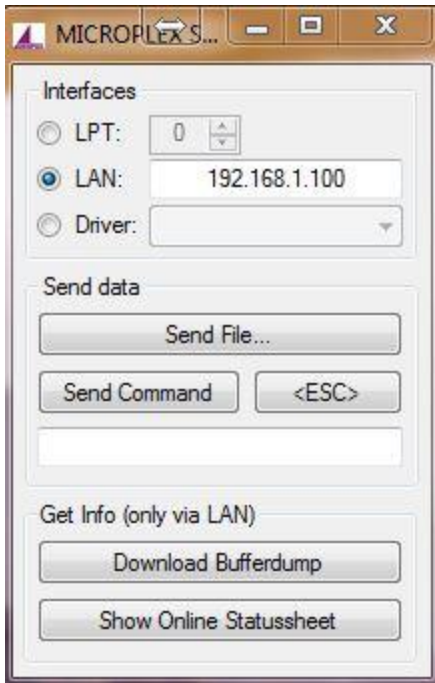


Loading a COO (configuration) via MPX Send To

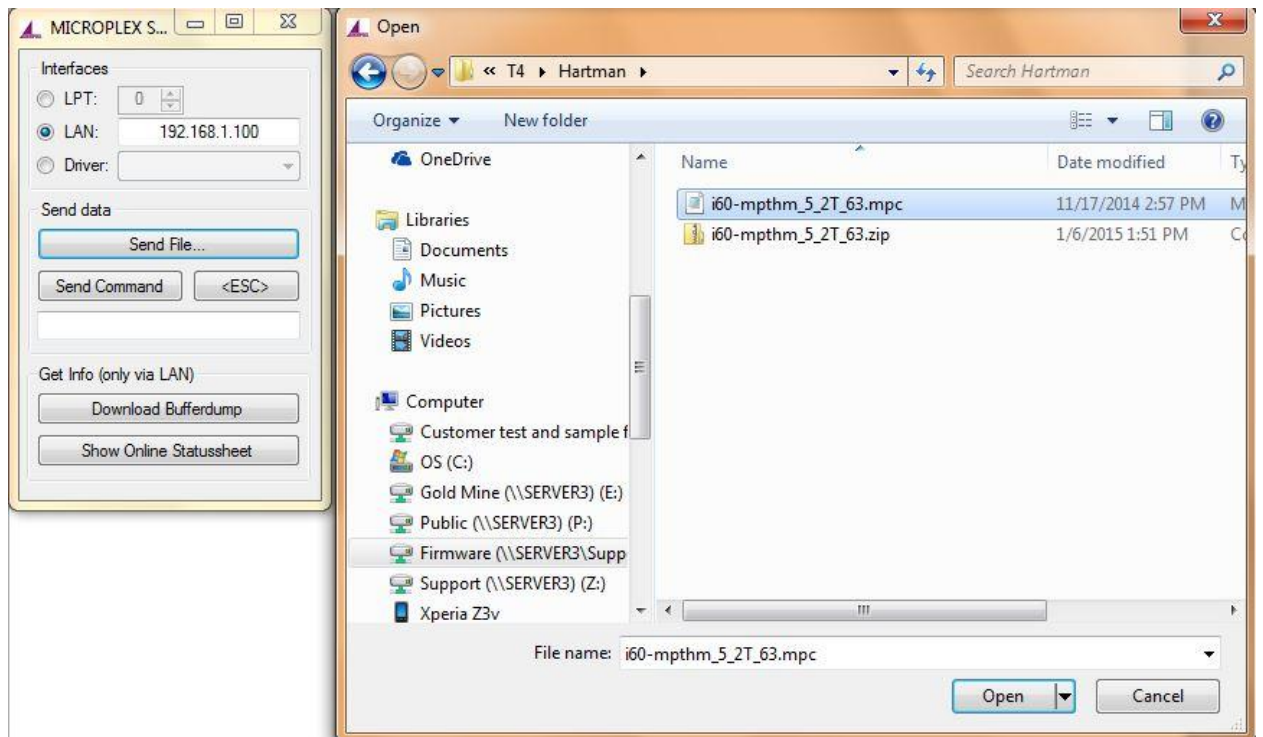
1. First **download** the MPX Send to program from https://www.microplex-usa.com/fileadmin/user_upload/Downloads/MPX_SendTo.zip
2. Download the firmware from the provided link and unzip it.
3. **Unzip** the **MPX Send to tool** on the PC you are using to send the firmware File
4. **Double click** the MPX Send To.exe. Note the program does not install it just opens
5. Once open it should look like the following



6. Type in the **IP** address of the printer in the **LAN** box. The **IP** address can be found on the **status sheet**.
7. If your IP was 192.168.1.100 it will look like the following.



- Now click the **Send File** button and Browse Window will pop open. Go to the folder where **firmware file** is Saved as shown below.



- Click the **Firmware** file and it is sent to the printer. Updating will appear in the display.
- Once the **Updating** message goes away turn the **printer off and back on** and you are done.